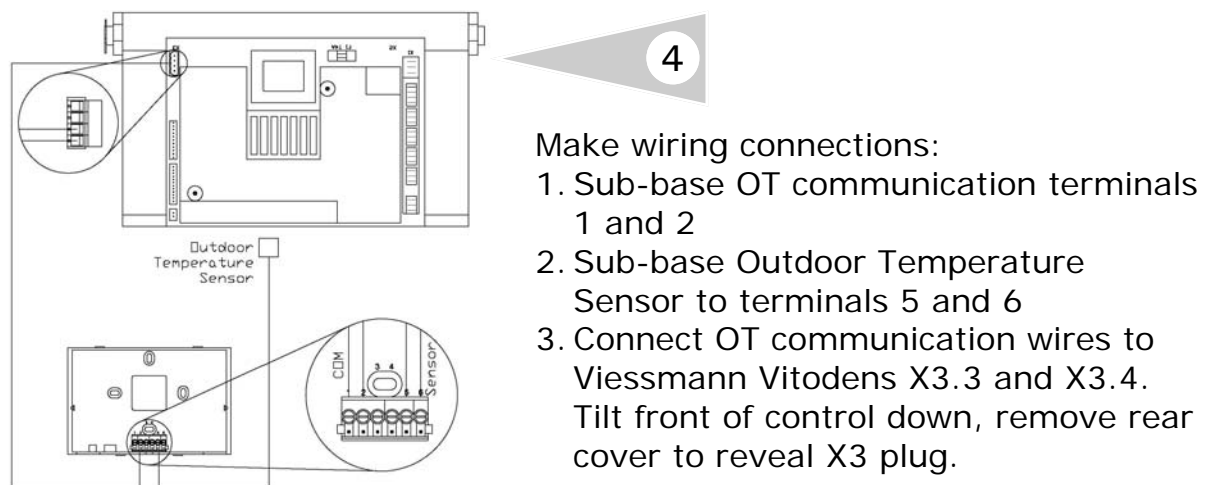
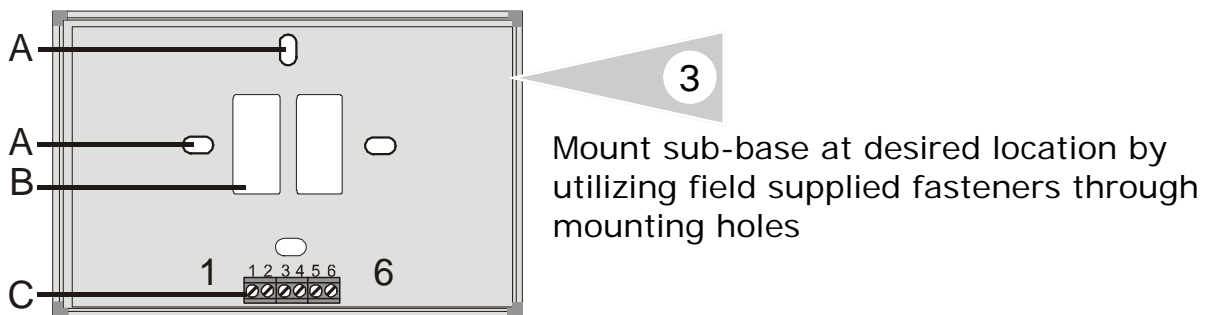
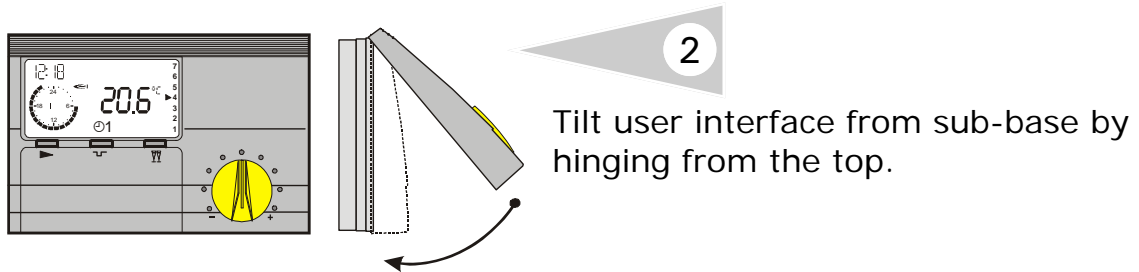
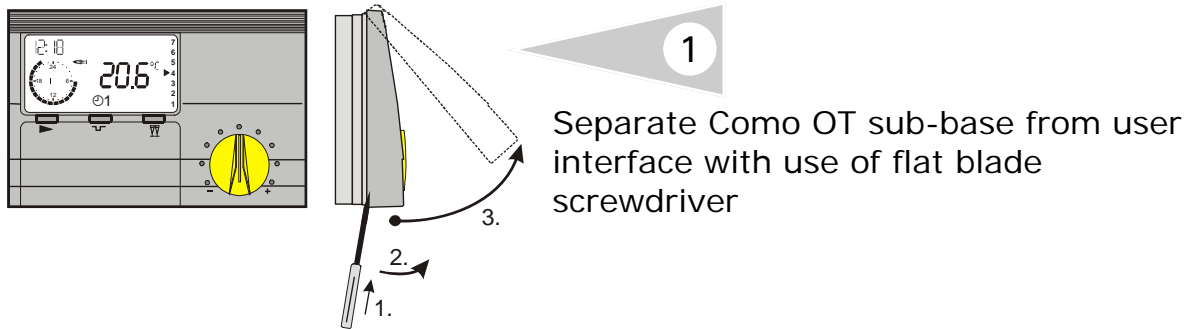



### Quick Start-up Assistant





# Versatronik Como OT Quick Start-up



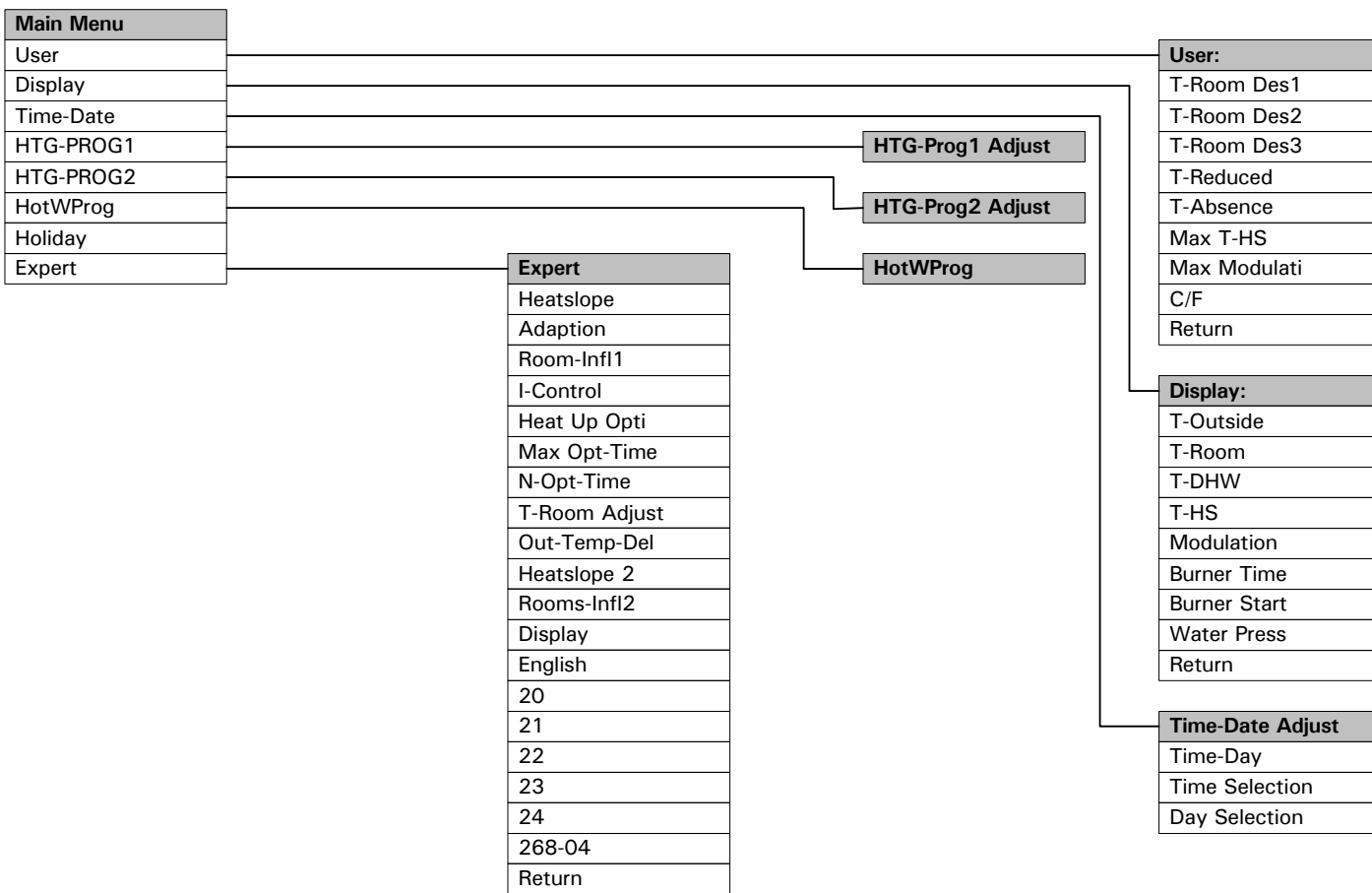
## Menu Navigation

-  Programming key
  - a) Select a value level
  - b) Select a value to be changed
  - c) Saving the new value

 Plus key  
(Search for or change value)

 Minus key  
(Search for or change value)

KWE P/N 542 018 Versatronik COMO OT Quick Start-Up V1.0 01/2009 Technical information subject to change without notice



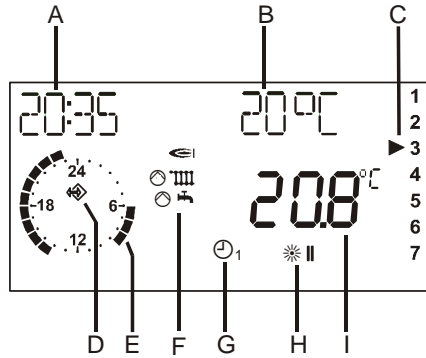
# Versatronik Como OT Quick Start-up

## Typical Baseline Settings

USER Settings	Setting
↓	
T-ROOM DES1	20C/68F
↓	
T-ROOM DES2	20C/68F
↓	
T-ROOM DES3	20C/68F
↓	
T-REDUCED	20C/68F
↓	
T-ABSENCE	20C/68F
↓	
MAX T-HS	85°C/185°F
↓	
MAX MODULATI	80
↓	
°C / °F	Select
↓	
RETURN	

EXPERT Settings	Settings
↓	
HEATSLOPE	1.0
↓	
ADAPTION	1
↓	
ROOM-INFL1	---
↓	
I-CONTROL	OFF
↓	
HEAT UP OPTI	0
↓	
MAX OPT-TIME	0-3 => 2:00h
↓	
N- OPT-TIME	Display only
↓	
T-ROOM ADJUST	0
↓	
OUT-TEMP-DEL	50C/122F
↓	
HEATSLOPE 2	0
↓	
ROOMS-INFL 2	---
↓	
DISPLAY	0/1 => 0
↓	
ENGLISH	=>GB
↓	
Return	

# Versatronik Como OT Quick Start-up



## Display Overview

- A Current time
- B Set room temperature (represented in degrees Celsius)
- C Day (1=Monday, 2=Tuesday, ..., =Sunday) (as shown, 3 = Wednesday)
- D Bus symbol (if this symbol does not appear, check the data cable to the boiler)
- E Indicates the active heating program (as shown 6:00 to 9:00 and 14:00 to 23:00)
- F Status indicator: burner ON; heating operation; hot water preparation
- G Mode selector switch (as shown 1 => Heating according to time program 1)
- H Mode indicator and current status (here: II => Heating with set room temperature 2)
- I Display of the current room temperature

## Mode Selection

Press the operating mode selector button as often as necessary to set the operating mode required. The selected operating mode is represented by a symbol in the display. It takes effect when the selected setting remains unchanged for 5 sec.

The following operating modes are available for selection:

- Standby / OFF  
(heating OFF, only frost protection function active)
- Automatic mode  
(heating according to time program 1)
- Automatic mode  
(heating according to time program 2)
- Summer mode  
(heating OFF, only hot water preparation active)
- Day mode (Normal mode)  
(24 hour heating at comfort temperature 1)
- Night mode (Reduced mode)  
(24 h heating at economy temperature)

- Operating mode selector switch
- ECO key (interruption of heating time)
- Party key (heating time extension)
- Modification of set room temperature

## IMPORTANT

Read and save these instructions for future reference

KWE Technologies Group  
 750 McMurray Road  
 Waterloo, Ontario, Canada  
 N2V 2G5  
 Tel: (519) 747-5042  
 Fax: (519) 747-4448  
 www.kwe-tech.com  
 info@kwe-tech.com

