

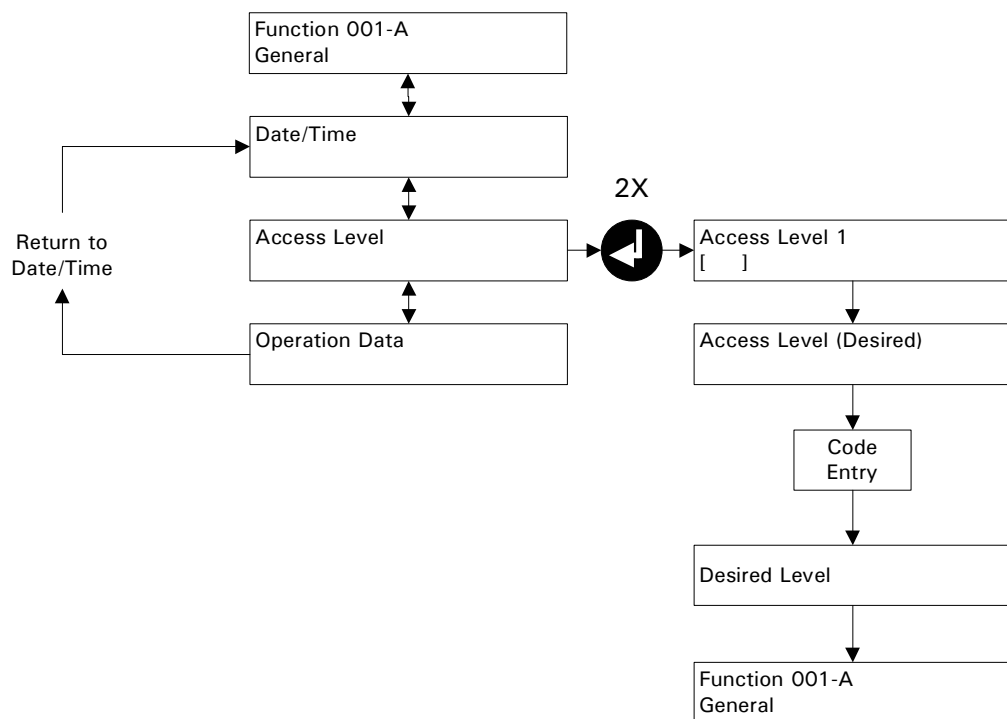
Quick Entry to Fault History

Press **ESC** **ESC** "Function General" will be displayed

If "Function Cascade Control" is displayed, press **↓** or **↑**

Until "Function General" screen. Then press **↵**

Press **↓** or **↑** until Access Level screen is visible then press **↵**



Press **↵** current access level will flash in display

Enter access codes for desired level

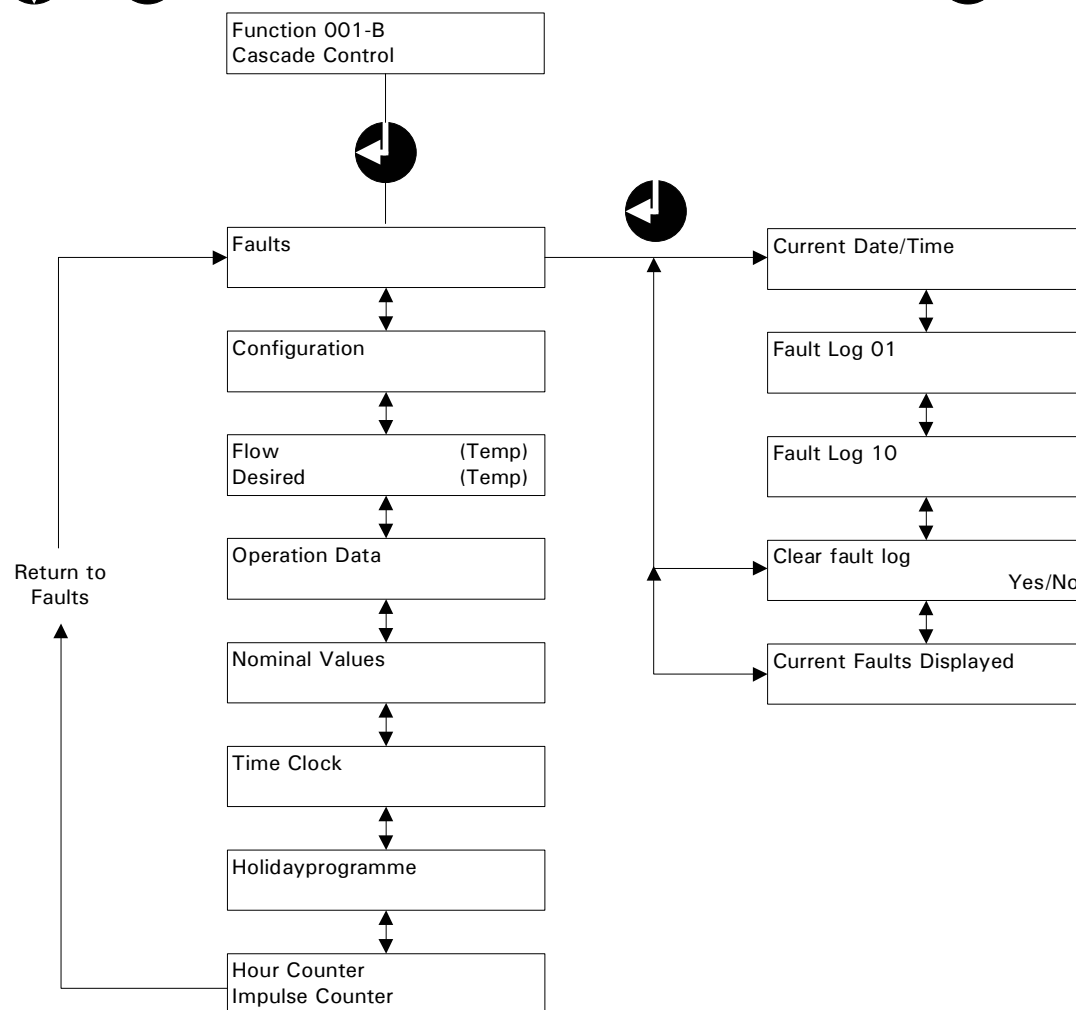
↑ **↓** **ESC** **↵** Access level 2

↓ **ESC** **↵** **ESC** Access level 3

Press **ESC** **ESC** to exit into desired level

Press **↓** or **↑** until Cascade Control screen is visible then press **↵**

Press **↓** or **↑**
until desired selection is found



Press **↓** or **↑**
until desired
selection is found

Press **↵**
to activate choice
Selection will start
to flash and press
↓ or **↑**
to choose from
available variables
Press **↵** to confirm