

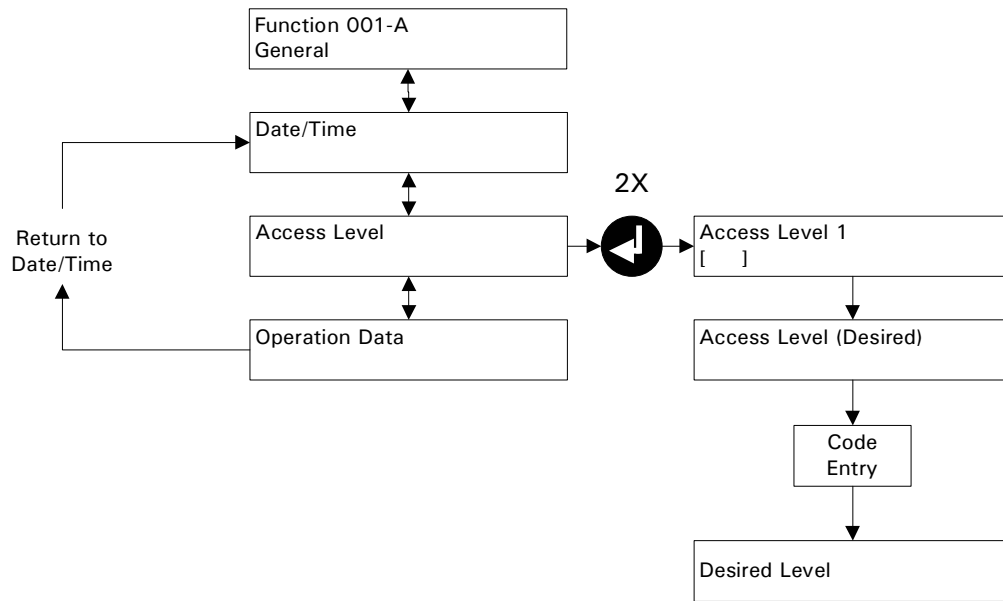
## Quick Entry to "General" Configuration Option

Press **ESC** **ESC** "Function General" will be displayed

If "Function Cascade Control" is displayed, press **↓** or **↑**

Until "Function General" screen. Then press **↵**

Press **↓** or **↑** until Access Level screen is visible then press **↵**



Press **↵** current access level will flash in display

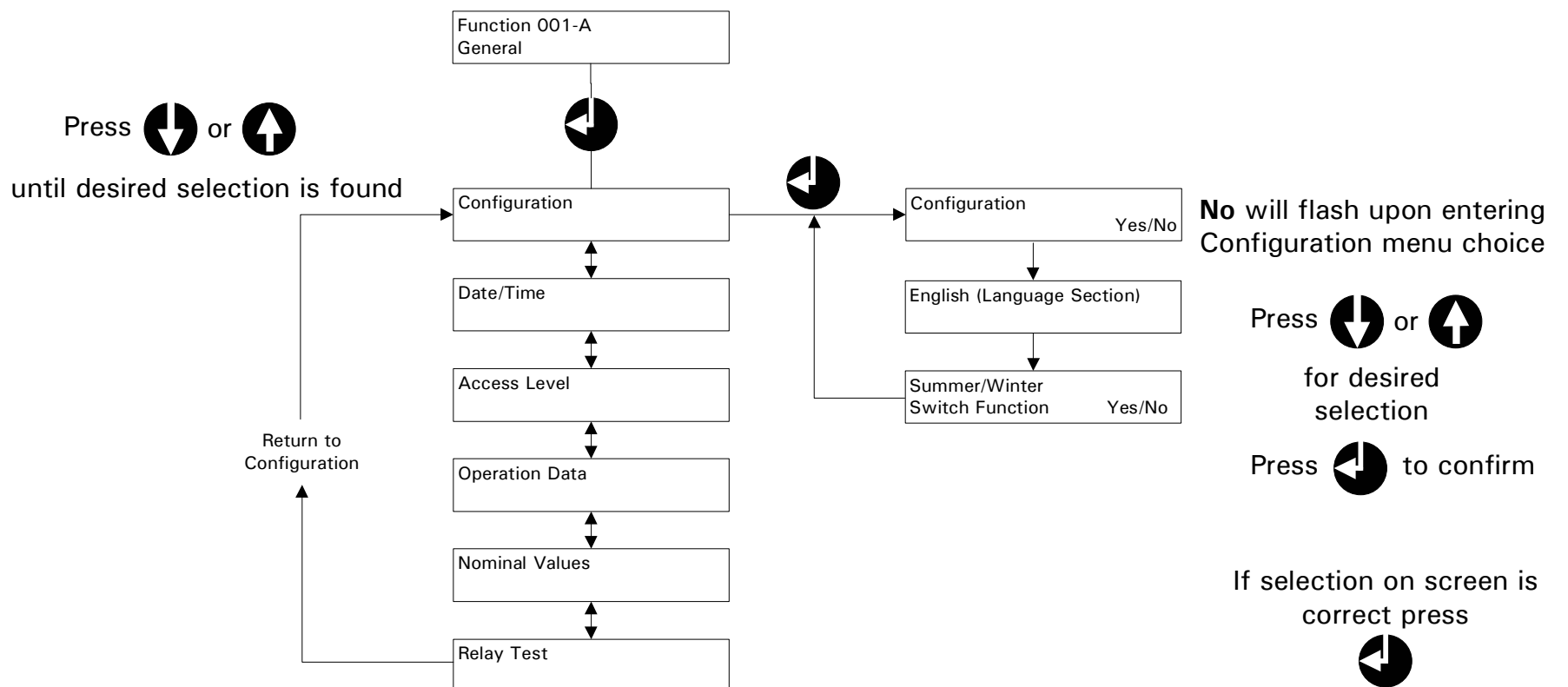
Enter access codes for desired level

**↑** **↓** **ESC** **↵** Access level 2

**↓** **ESC** **↵** **ESC** Access level 3

Press **ESC** **ESC** to exit into desired level

Press **↓** or **↑** until Function General screen is visible then press **↵**



**No** will flash upon entering Configuration menu choice

Press **↓** or **↑**

for desired selection

Press **↵** to confirm

If selection on screen is correct press

