

Commissioning Guide Moving Subnets

Use with Viessmann Vitotronic NR2 controls with LonMaker® based building automation system software



Trademark Information

Viessmann® and Vitotronic® are trademarks of Viessmann Werke GmbH & Co KG registered in the United States and other countries.

Please visit:
www.viessmann.ca
www.viessmann.us

Echelon®, LON®, LONWORKS®, *i.LON*®, LNS®, LONMARK®, Neuron®, and the LonUsers logo are trademarks of Echelon Corporation registered in the United States and other countries.

Please visit:
www.echelon.com

† All other products listed are trademarks of their respective companies.

IMPORTANT

Note:
This guideline provides necessary information to assist in the setup of LonMaker® software to access Viessmann LON system. This information is purely a supplement to the information provided by LonMaker® and Viessmann. It should only be used by those familiar with the product and processes required for commissioning of these systems.

More Viessmann control information can be found in the LON Handbook available from Viessmann or download from www.kwe-tech.com documentation web page.

Information

Toolbinding Overview

In the factory default setting, Viessmann control units are bound via self-installation process (Selfbinding or Autobinding). This self-installation process establishes all necessary connections for data exchange between Viessmann control units. This, however, does not cover the entire range of requirements.

Specifically, the following requirements cannot be covered by the selfbinding process:

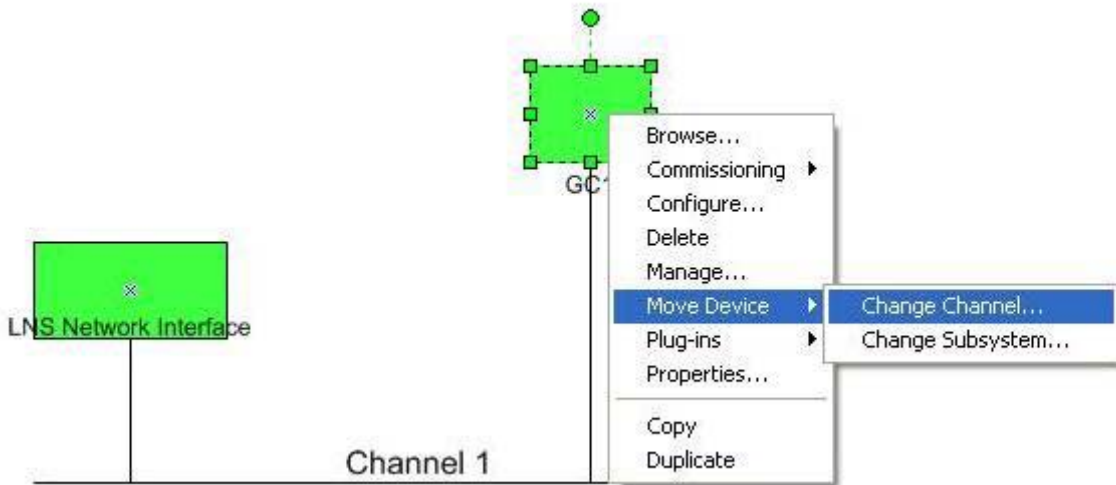
- If data must be exchanged between Viessmann control units and devices from other manufacturers.
- If, in addition to the relay outputs of the control, logical signals of the controls processor should be used via an in-/ output module.
- If, for example, via an external 0-10V analog signal, a heat demand is connected for heat production.
- If Viessmann control units in a system are located on both sides of a router due to long cabling.
- If data exchange between Viessmann control units must take place in a different manner than prescribed by the selfbinding process, e.g. if the outdoor temperatures of three sensors must be distributed to two devices.
- If more than five Viessmann heating plants are installed in a network.
- Other possible requirements

If one of the above requirements applies, the system must be configured via start-up software (toolbinding) such as LONmaker. When configuring the system using LONmaker, all bindings that would have been established by the self-installation process, must be recreated.

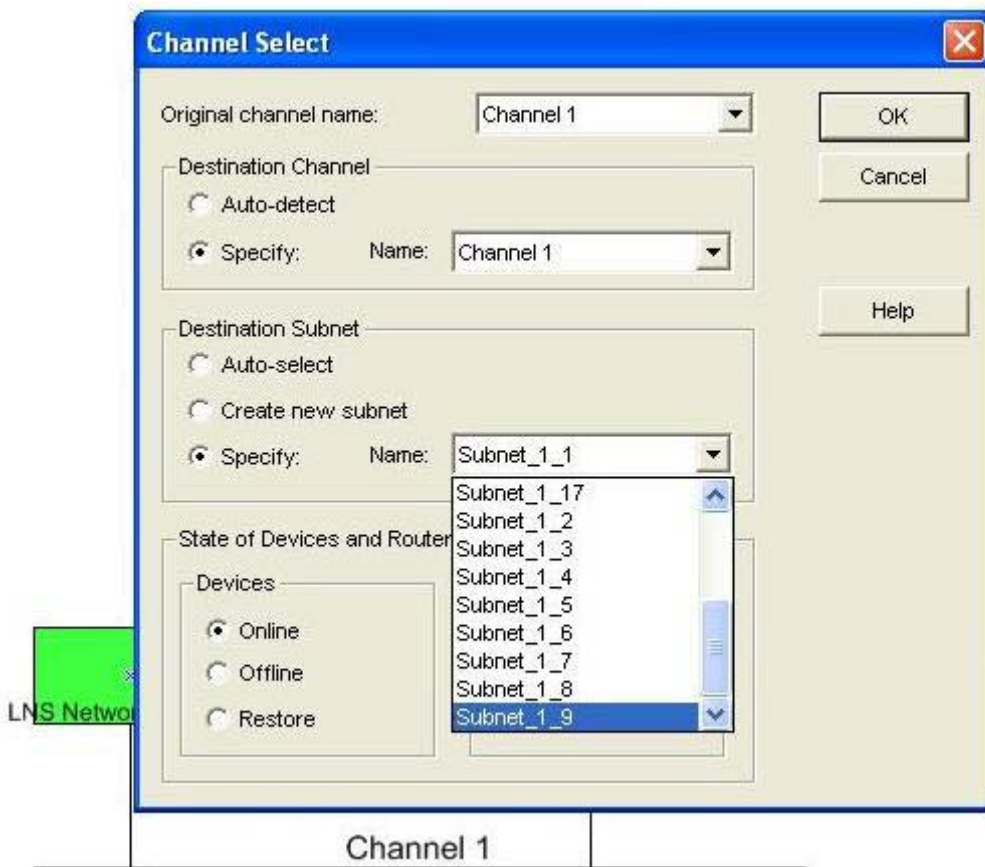
Information

Moving Vitotronic Controls to a new Subnet

The information reviewed below provides a brief overview of moving Vitotronic controls to a new Subnet when using LonMaker software..



Move device to another subnet



Information

The screenshot shows the 'Device Properties' dialog box with the following configuration:

Field	Value
Device name:	GC1
Handle:	4
Subnet/node ID:	9/3
Subnet name:	Subnet_1_9
Neuron ID - Current:	001211123300
Neuron ID - Pending:	001211123300


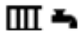
Note: LonMaker has assigned subnet 9 and node id 3 to the control.

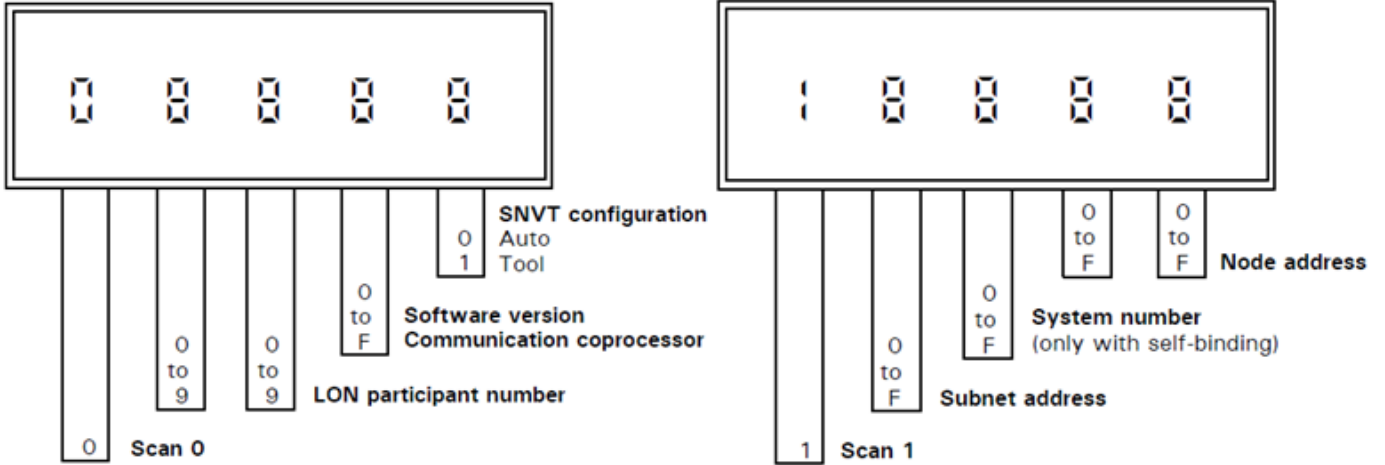
Power cycle the control by turning OFF and back ON.

Information

Verification control in Tool Binding

Check whether the control is in tool-binding or self-binding mode

Press the  and  buttons simultaneously for 2 seconds to enter diagnosis level.



Scan code 0 will show whether the control is in self- (auto-) binding mode or tool-binding mode.



Scan code 0:

Note the last digit shows a value of 1 for tool binding mode



Scan code 1:

Note the scan code shows a subnet of 9 and a node id of 3

KWE Technologies Group
750 McMurray Road
Waterloo, Ontario, Canada
N2V 2G5
Tel: (519) 747-5042
Fax: (519) 747-4448
www.kwe-tech.com
info@kwe-tech.com

